

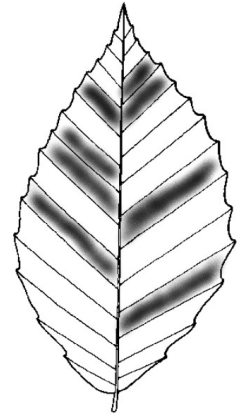


# Forest Health Workshop Series 2023

## Identifying and Managing Forest Pests and Diseases

Massachusetts Dept. of Conservation and Recreation  
Bureau of Forestry

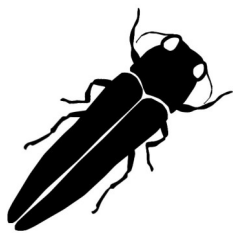
Join DCR foresters at this walk and talk field series where they will discuss current forest health concerns in Massachusetts. Attendees will learn how to identify the signs and symptoms of common forest pests and diseases, as well as, management options and mitigation techniques. Topics will include beech leaf disease, spongy moth, emerald ash borer, southern pine beetle, eastern white pine decline, hemlock woolly adelgid and elongate hemlock scale. Enjoy a hands on learning experience and the opportunity to talk one on one with forest health experts.



Come prepared to spend two hours in the outdoors, walking over varied terrain. The workshop at Wompatuck State Park will be held on the park's accessible trail.

### Professional Credits

1 pesticide contact hour available for Massachusetts categories 35, 36, and applicators license. MCA CEU credits, ISA CEU credits, MA Licensed Forester CFE credits, and MA Timber Harvester credits available.



### Registration

The workshops are free of charge and open to all but do require registration as space is limited. To sign up, please email Tom Prior at [thomas.prior@mass.gov](mailto:thomas.prior@mass.gov) with your name, which date you will be attending, and if you will be applying for pesticide contact hours or professional credits.

### Dates and Locations

Beartown State Forest	Monterey, MA	Friday June 16	9am-11am
Rutland State Park	Rutland, MA	Friday June 23	9am-11am
Wompatuck State Park	Hingham, MA	Friday July 7	9am-11am
Bradley Palmer State Park	Topsfield, MA	Friday July 14	9am-11am
Mt Tom State Reservation	Holyoke, MA	Friday July 21	9am-11am
Myles Standish State Forest	Carver, MA	Friday July 28	9am-11am